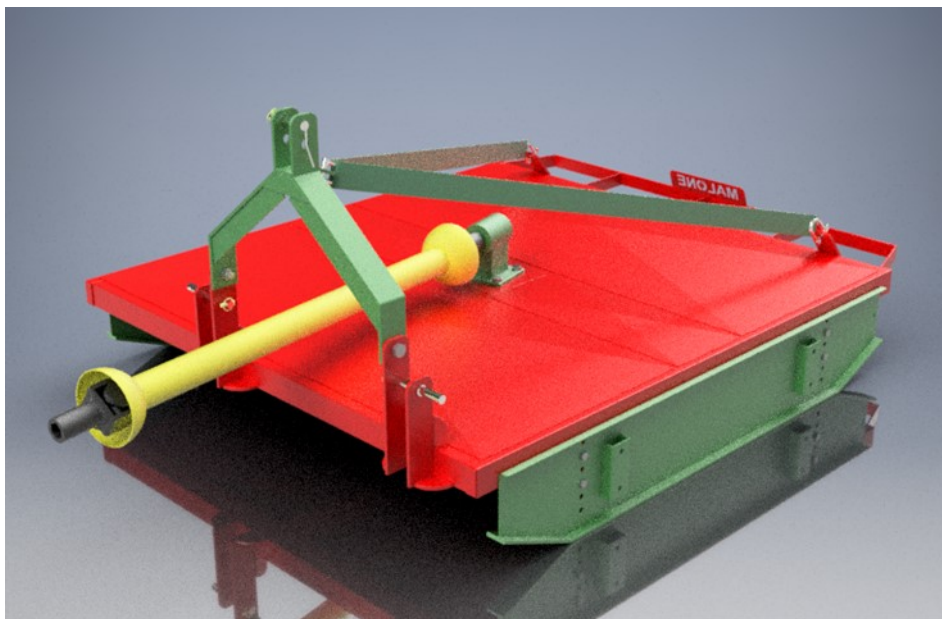




Topper ProCut 2000



Operators Manual

**ENSURE ALL OPERATORS ARE FAMILIAR WITH THIS
OPERATORS MANUAL, BEFORE USING THE MACHINE**

Issue: 003



Malone Farm Machinery

Ballyglass, Claremorris,
Co. Mayo, F12 AP11
Republic of Ireland
www.malonefm.com



Table of Contents

1. DECLARATION OF CONFIRMITY	3
2. GENERAL INFORMATION.....	4
3. TECHNICAL DATA	5
4. DESCRIPTION	5
5. SAFETY INFORMATION.....	6
6. SAFETY DECALS.....	8
7. PRE-OPERATION CHECKLIST.....	9
8. OPERATING THE MACHINE.....	9
8. MAINTENANCE AND LUBRICATION	10
9. MALONE LIMITED WARRENTY.....	11
10. SPARE PARTS SECTION	13

DECLARATION OF CONFORMITY

We,

Malone Farm Machinery
Ballyglass,
Claremorris,
Co.Mayo
F12 AP11
Republic of Ireland

Declare under our sole responsibility that:

The product (type): Topper

Product code: Topper

Serial No:.....

Date:

Manufactured by the above company



Conforms to EU Engineering Regulations and other relevant EU guidelines.



Conforms to UK Engineering Regulations and other relevant UK guidelines.

Signed.....

(on behalf of Malone Farm Machinery)

.....

(Status)

1. GENERAL INFORMATION

Thank you for purchasing a Malone product. You have purchased a strong, reliable and efficient rotary topper. To fully utilize the qualities of the Topper, please ensure you read this manual, and this ensures a longer working life, greater safety and optimal performance.

BEFORE OPERATING THIS MACHINE READ CAREFULLY THE INSTRUCTIONS GIVEN IN THIS MANUAL

USING YOUR OPERATOR'S MANUAL

Read, understand and follow the instructions in this manual, doing so will promote safe, productive and reliable service.

This manual was prepared to help you use, and maintain your new machine safely. Reading your operator's manual will help you and others avoid injury or damage to the machine. This machine can cause serious property damage, personal injury or even death if it is misused. For your safety, as well as the safety of others, you must follow the safety precautions in this operator's manual.

This manual is an important part of your machine. It should remain with the machine if and when it is sold. If it is damaged or lost, you may contact your dealer, or Malone Farm Machinery company to get a replacement.

Before delivering this machine, your dealer performed a pre-delivery inspection to ensure best performance.

If you have any queries, please contact Malone Farm Machinery who will be able to give you the correct assistance and advice.

Contact: Malone Farm Machinery LTD

Ballyglass,
Claremorris,
Co. Mayo
F12 AP11
Ireland

Tel: +353 (0) 94 93 60 500

Email: stores@malonefm.com

Website: www.malonefm.com

The contents of this manual can be modified only by the manufacturer and without notice to the Client. Malone Farm Machinery shall not be liable for errors or faults in this manual.

2. TECHNICAL DATA

Type	Topper Pro Cut 2000
Number of rotors	1
Diameter of rotor	1.50 m
Working width	1.50 m
Width of the machine	1.80 m
Length	2.20 m
Weight	830 kg
Necessary tractor power	30 HP / 22 KW
PTO shaft speed	400-540 rpm
3 Hitch point	CAT 2
Lifting to transport position	Hydraulic – Single acting
Length between the joints	1.20 m

3. DESCRIPTION

Built for tractors from 30HP upwards this rotor machine is ideal to tackle growth up to 30mm diameter. It is fitted with two heavy duty blades which are fixed to a single rotor on a direct drive from a centrally mounted gearbox.

This gearbox is specifically designed for this type of machine as it has an extended bearing housing and heavy duty bearings to support the cutting rotor.

Power is transmitted through a heavy duty P.T.O. shaft which is fitted with a shear bolt torque limiter. This protects the transmission from overload. Cutting height adjustment is by two side-mounted, wide based skids. This machine needs a tractor with minimum 30hp and maximum 60hp.

SAFETY INFORMATION

In the interest of safety, it is important that great care is adopted at all times during the attachment, transportation, operation and maintenance of this machine. Both the owner and the operator of the machine should read and understand the following section to ensure the safety of themselves and all other persons who enter into the close proximity of these machines. Never operate the machine if unauthorized persons are in the area. Stop operation of the machine if unauthorized persons approach. Explain to them the potential hazards so they understand why you will not continue until they have left the area. You are responsible for safe operation of the Topper. The most important safety device on the equipment is a safe operator. Hazards associated with topping maybe pinch points, noise exposure, splinters, eye injury, impact trauma and trip/slip/fall. In addition to the instructions stated here always abide by general safety and accident regulations.

- Never carry out any maintenance or repair work on the unit while the tractor engine is running.
- Never carry out any maintenance or repair work on the Topper if it is in a raised position, unless it is supported independently of the tractor hydraulics in a secure manner.
- Never put hands or fingers near the Topper while the tractor is running.
- The operator should be wearing reflective safety clothing, hearing protection, a hard hat, steel toe boots and gloves. Any other persons who will be working nearby must also wear hearing protection.
- Person MUST BE OVER 18 to operate these Toppers.
- Safety and warning decals placed on the machine give important instructions for safe work take them into consideration for your safety and the safety of others.
- While driving on public roads always abide traffic signs and road regulations.
- Familiarise yourself with the controls and functions of the machine and practice them in a safe location before attempting to work.
- Never approach this machine whilst it is working or running. Always switch off the machine and wait until it has stopped fully before approaching.
- Do not wear loose fitting clothing in the vicinity of this machine.
- Check no one is near, or on, the machine before attempting to start or transport it. Ensure your visibility is kept clear at all times.
- Implements should always be attached according to the manufacturer's instructions and fastened correctly to the prescribed devices using the correct components.
- When disconnecting the machine from the tractor, select a firm level site and use the supports legs.
- Take care when disconnecting the machine from the tractor.
- Ensure controls for the machine are positioned such that the machine cannot accidentally be started during transport.
- For transportation on the road, prepare and secure the machine according to the manufacturer's instructions.
- Never leave the driver seat whilst the tractor of the machine is running.
- Never attempt to operate a machine without its safety devices fitted or incorrectly secured.
- Always place the machine in a safe position before leaving the tractor. Lower the implement completely, switch off the engine and remove the ignition key.

Operator Manual—Topper

- Never permit anyone between the machine and the tractor whilst either is working or when the machine is in a raised position.
- Be aware at all times of the width, height and length of any machinery you are operating, especially when transporting on the public highway or near obstructions.
- Ensure the work area is clear of obstructions before starting work (clear stones, wires, glass or any other dangerous objects from the work site before attempting to start work).
- Do not operate the machine without safety guards or if the guards are damaged.

Transportation safety

- Make sure you are in compliance with all local regulations regarding transporting equipment on public roads and highways.
- Ensure the weight is at the lowest point when transporting.
- Ensure that the machine is securely attached to the tractor.

Please Note: The manufacturer does not guarantee the Topper compliance with the applicable laws, in particular those relating to accidents prevention and pollution, of non-EU countries. The adjustment of the Topper to these regulations will be entirely under the Client's own responsibility. The manufacturer is not liable for any kind of damage that could arise from the non-compliance of those rules.

SAFETY DECALS

Safety decals must be replaced if stickers are missing or become illegible

Read the operator's manual carefully before you operate the machine. Reading the operators manual ensure safe operation of the machine



Keep clear of the machine when the rotors are in motion. Entanglement can happen if a person comes in contact with the rotating blade.



Danger of cutting hands. Keep hands away from rotating blade if machine is in operation.



Tighten gearbox nuts daily and check gearbox oil level. Loose nuts on the gearbox or low oil level can result in damage to the machine which may lead to an accident.



PRE - OPERATION CHECKLIST

It is important for both personal safety and maintaining the good mechanical condition of the Topper that this checklist is followed.

- Grease every 20 hours of operation and pre / post season.
- Ensure tractor is of sufficient weight to be stable with the Grass Topper attached.
- Ensure that the Topper is properly attached to the tractor's 3 point linkage and that the mechanical retainers such as linch pins are installed.
- Check that the PTO shaft is properly fitted and that protective covers are in good condition.
- Check for damaged, worn, missing parts and replace if necessary.
- If you are in any doubt about the mechanical condition of the Topper, you are advised not to use it and consult Malone Engineering regarding your concern. (If the Topper's warranty has expired, you may contact another competent mechanical engineer).
- Malone Engineering takes no responsibility for accidents, injuries or loss of limbs when using the equipment.

OPERATING THE MACHINE

To connect the machine to the tractor

Make sure the front axle weight of the tractor is sufficient (use front weights if necessary) to lift the Topper. Make sure the tractor is aligned with the Topper. Check that the three-point linkage arms of the tractor are at an equal height. Fit the lower arms to the linkage pins (CAT 2) of the tree-point hitch. Attack the top link of the tractor to the machine with a pin (CAT2 top link). Once the Topper has been attached to the three-point linkage of the tractor, raise the lift . Turn off the tractor before installing the PTO shaft. Make sure that the PTO shaft telescopes smoothly. Connect the machine PTO shaft to the tractor PTO shaft.

Operating instructions

- Ensure the machine is hitched correctly to the tractor as previously described.
- Ensure bystanders are clear from the machine & cannot be hit with debris expelled from the machine.
- Start up the tractor PTO at a low RPM.
- Build up to operating speed, select a suitable forward gear & proceed to cut grass.
- Do not exceed 540 RPM as the machine is not designed to operate any faster.

MAINTENANCE AND LUBRICATION

Check, and tighten (if required), all nuts, bolts and fixing after the first few hours of work and at regular intervals thereafter. Grease PTO shaft every 20 hours of operation and pre / post season. Good maintenance of a machine will ensure a safe working environment and long service life of the machine.

- Lubricate the PTO shaft as in the manufacturer's handbook.
- Grease the pivot joints and the drive line every 8-10 working hours.
- Central Gear box (80-90 gear oil) change oil after 50 working hours for the first time and then after every 400 working hours.

Periodic attention

An inspection and maintenance check is necessary for the Topper every year. The Topper should be overhauled from time to time during the year to see if lubrication or maintenance is needed.

Maintenance overhaul consists of:

- Examination of nuts & bolts – tighten them if required.
- Examination of PTO shaft protections cover.
- Lubrication according to the instructions for maintenance and lubrication.

Storage

The machine should be stored on a firm level site in a safe, clean and dry location where it is protected from the elements. It is advisable that prior to storage of the Topper at the end of the season that the machine be lubricated thoroughly and the opportunity taken to check the machine for worn or damaged parts - replacements can then be ordered and fitted so that the machine is ready for the next seasons work.

MALONE LIMITED WARRANTY

Malone Ballyglass, Claremorris, Co. Mayo, Ireland (hereinafter called “the company”) warrants to the original retail purchaser that new products **sold and registered** with the company, shall be, at the time of delivery, free from defects in material and workmanship, and that such equipment is covered under Limited Warranty providing the machine is **used and serviced** in accordance with the recommendations in the Operator’s manual. This Limited Warranty covers the equipment for a period of one year starting from the date the equipment is commissioned.

The email or post submission of the pre-delivery inspection (PDI) form by the dealer (importer) is taken as evidence of the delivery of the machine to the original retail purchaser. This is compulsory, and is required to record the machine in the **Malone** warranty system.

These conditions are subject to the following exceptions:

- Parts of the machine which are not of **Malone** manufacture, such as tyres, tines, PTO shafts, slip clutches, hydraulic cylinders, etc. are not covered by this Limited Warranty, but are subject to the warranty of the original manufacturer. Warranty claims applying to these types of parts must be submitted in the same way as if they were parts manufactured by **Malone**. However, compensation will be paid in accordance with the warranty agreement of the manufacturer concerned.
- This Limited Warranty does not apply to failure through normal wear and tear, to damage resulting from negligence or from lack of inspection, from misuse, from lack of maintenance and/or if the machine has been involved in an accident, lent out or used for purposes other than those for which it was intended by the company.
- This Limited Warranty will not apply to any product that has been altered or modified in any way without the express permission of the company, or if parts not approved by **Malone** are used in repair.
- The company take no responsibility for any additional costs, including loss of oil and/ or consumables incurred during the failure and repair of a product
- The company cannot be held responsible for any claims or injuries to the owner or to the third party, nor to any resulting responsibility.
- Also, on no account can the company be held liable for incidental or consequential damages (including loss of anticipated profits) or for any impairment due to failure, a latent defect or a breakdown of a machine.

The customer will be responsible for the following costs:

- Normal maintenance such as greasing, maintenance of oil levels, minor adjustments, etc. as specified in the Operator’s manual.
- Labour charges other than originally agreed, incurred in the removal and replacement of components.
- Dealer’s travel time and travel costs to and from the machine.
- Parts defined as normal wear items such as, but not limited to PTO shafts, chains, tyres, bearings, tines, slip clutches, etc. that are not covered under the Limited Warranty.

Operator Manual—Topper

The importer will be responsible for the following costs:

- All warranty labour charges.

The warranty is dependent on the strict observance of the following:

- The machine has been put in service by the **Malone** dealer according to our instructions.
- The online pre-delivery inspection (PDI) form has been correctly completed by the dealer.
- A printed version of the PDI form has been signed and dated by the original retail purchaser. This copy is to be stored by the dealer and made available to **Malone** when requested.
- The warranty claim is submitted using the **Malone** claims system.
- The warranty claim must be submitted by the original retailing **Malone** dealer only.
- The decision of the company in all cases is final.
- Damaged parts should be held by the dealer until credit has been given, or a returns request has been issued.
- Parts must be returned to **Malone**, with the **Malone** claim number written clearly on each individual part. These parts must be free from dirt and oil. If a part is returned in an unfit state, the claim will be refused.
- If damaged parts have been returned to the company and warranty is refused, the dealer is allowed a period of one month from the date of receiving our notification to request the return of the damaged parts to the dealer site.

Further conditions - limits of application and responsibility:

- This Limited Warranty cannot be assigned or transferred to anyone without the prior written consent of the company.
- **Malone** dealers have no right or authority to assume any obligation or take any decision on the company's behalf, whether expressly or tacitly.
- Technical assistance given by the company or its agents for repairing or operating equipment does not lead to any responsibility on the company's behalf and cannot under any circumstances bring novation or derogation to the conditions of the present Limited Warranty.
- The company reserves the right to incorporate changes in its machines without prior notice and without obligation to apply these changes to machines previously manufactured.
- The present Limited Warranty excludes any other responsibility, whether legal or conventional, express or implied, and there are no warranties extending beyond those defined herein.

No part of this manual may be copied or published by means of printing, photocopying, microfilm or any other process whatsoever without prior permission in writing by Malone Farm Machinery. All instructions, pictures and specifications in this manual are based on the latest information that was available at the time of publication. Your Topper may comprise improvements, features or options that are not covered in this manual.



Spare Parts

Topper

SPARE PARTS SECTION

To be assured of the latest design improvements purchase your Genuine Replacements from the Original Equipment Manufacturer through your local Dealer.

Always quote:

- **Machine Type**
- **Year of manufacture**
- **Serial Number**
- **Part Code**
- **Part Position Number & Page Number**
- **Part Description**



Serial Number

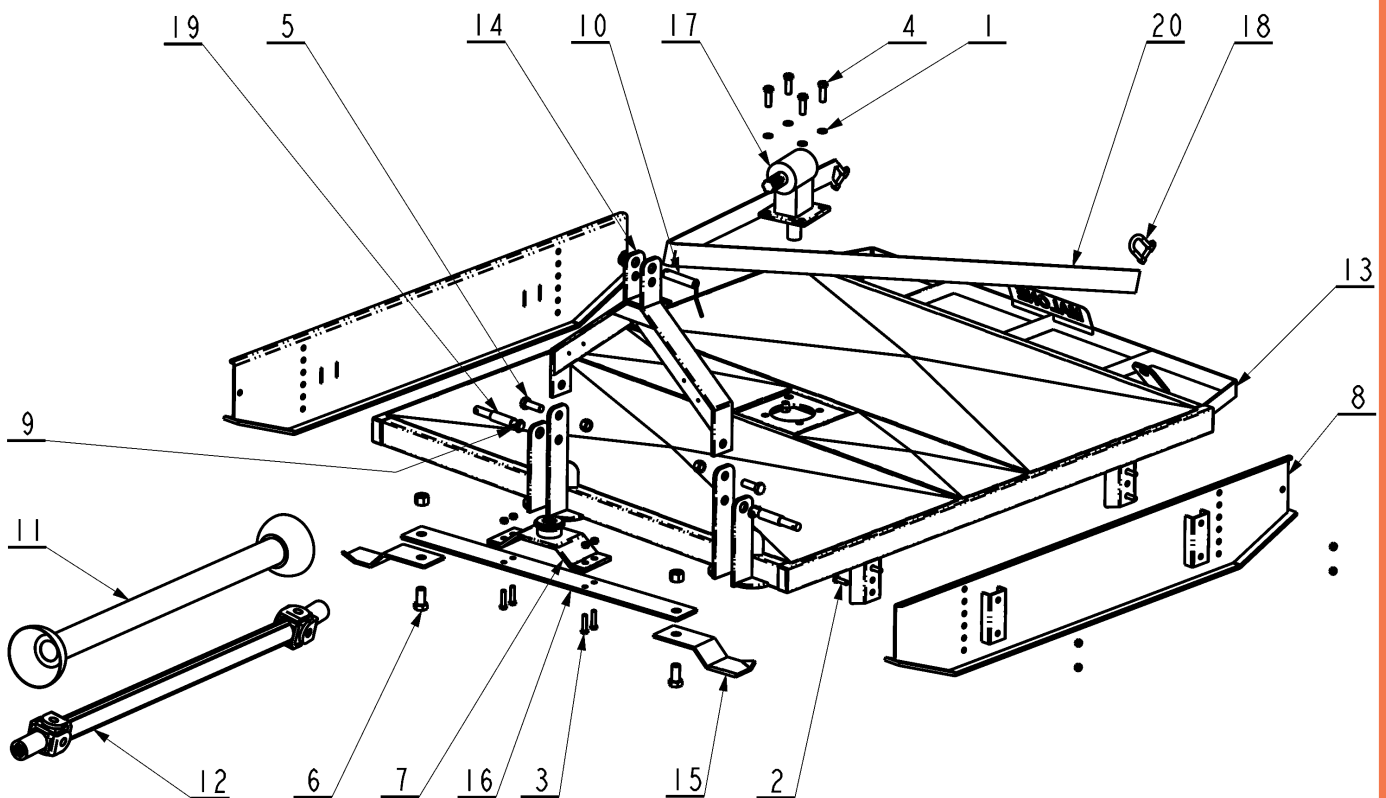
Note: The term “right” or “left” indicated in the description is to be understood when looking at the implement from the rear.

USE ONLY GENUINE SERVICE PARTS

Spare Parts —Topper



ITEM	QTY	PART NUMBER	DESCRIPTION
1	4	MNLW16	M16 NORDLOCK WASHER
2	8	M9331240N	M12 X 40MM BOLT + NUT
3	4	M9331250N	M12 X 50MM BOLT + NUT
4	4	M9331650N	M16 X 50MM BOLT + NUT
5	2	M9332060N	M20 X 60MM BOLT + NUT
6	2	M9332450N	M24 X 50MM BOLT + NUT
7	1	MAT10003	BLADE BAR CARRIER
8	2	MAT10025	SLIDE
9	3	MAT10038	LYNCH PIN
10	1	MAT10036	TOP LINK PIN
11	1	MAT10011	PTO SHAFT COVER
12	1	MAT10010	PTO SHAFT COMPLETE
13	1	MAT10031	MAIN TOPPPER BODY
14	1	MAT10018	HEADSTOCK
15	2	MAT10022	BLADE
16	1	MAT10001	BLADE BAR
17	1	MAT10013	GEARBOX
18	3	MAT10035	SHACKLE
19	2	MAT10037	SIDE LINK PIN
20	1	MAT10016	STRAP



Malone Farm Machinery

Ballyglass, Claremorris
Co. Mayo, Ireland. F12 AP11
Tel +353 (0) 94 936 0500
www.malonefm.com